



Press Kit

3rd edition of (re)connecting.earth

Sensitive Resources

29.4 – 14.6.2026

Exhibition venues
La Comédie de Genève
Voie verte
Villa du Parc
Gare des Eaux-Vives
Chêne-Bougeries
Gare de Chêne-Bourg
Thônex

Openings
28.4.26 à la Comédie de Genève
29.4.26 à la Villa du Parc à Annemasse
et sur la voie verte dans les communes
de Chêne-Bougeries et Thônex

THE SPRING ART AND ENVIRONMENT TRAIL IN ROMANDIE

The art-werk association is delighted to present the 3rd edition of the (re)connecting.earth Biennial in Geneva, entitled *Sensitive Resources*. From 29 April to 14 June, along an open-air route, visitors will be invited to discover an exhibition featuring 17 international artists and collectives, who explore the theme of natural resources to forge links between art, science and nature. This year, the route will link two cultural institutions, one on the Swiss side and the other on the French side: from the Comédie de Genève, via the Voie Verte, to the Villa du Parc in Annemasse.

RESOURCES

Our dependence on natural resources becomes particularly apparent during oil crises, wars or epidemics. These situations disrupt supply chains and serve as a stark reminder of how essential all these interconnected natural elements are to the functioning of our societies and of life itself. Yet most of us know far too little about these materials: their origins, the conditions under which they are extracted, or the transformations they undergo before entering our daily lives. In their unobtrusive or transformed forms, they make up the objects, infrastructure and technologies that shape our environment.

Many artists around the world take a curious and critical interest in these materials, which are often invisible in our part of the world or simply in our daily lives. Their works thus invite us to look beyond the surface of the objects that surround us and to question the economic, technical and environmental systems that make their existence possible.

Art is not presented here as a stance, but as a space for observation and discussion. It allows us to set aside the obviousness of the visible and to take a closer look at the materials and processes that shape our world. In this context, a dialogue becomes possible between the arts and the sciences. Scientists explore the questions raised by the artworks, contribute their knowledge and develop the themes that these works bring to light.

THE VOIE VERTE: A CROSS-BORDER LINK

This year, in close collaboration with the Comédie de Genève, the Villa du Parc in Annemasse, and partners from the scientific community and civil society, the Voie Verte takes centre stage, as it will host the majority of the exhibition route.

The Biennial will symbolically and physically link these two cultural venues along a cross-border route in the open air. The theme *Sensitive Resources* fits perfectly with the site in question, given the massive movement of natural resources during the CEVA construction project. Indeed, the works on the Léman Express and the Voie Verte have created a rich ecological corridor, which the public will be able to fully appreciate thanks to the scientific research carried out by art-werk and its partners.

This theme also takes on a particular significance in Geneva, home to the WTO and the WHO, a central hub for the global trade in natural resources. (re)connecting.earth is a Biennial that makes the territory itself a subject of reflection.

ART AND SCIENCE IN THE SERVICE OF CURIOSITY

With over fifty works by Swiss and international artists, some of which have been specially commissioned for the Biennial, the public will be encouraged to develop a fresh perspective on natural resources through art, science and the involvement of civil society.

The invited artists' practices lie at the intersection of political ecology, extractivism, collective memory and artisanal know-how. Their works engage with the history and transformations of the Geneva region. Among them, the Biennial will welcome Seba Calfuqueo, Ana Alenso and Olaf Holzapfel, whose works you may have seen at documenta 14. The exhibition will also feature the results of the co-creation project carried out last November, bringing together artists, residents and primary school students.

The curatorial approach is rooted in a micro-to-macro logic: observing what is there, along the Voie verte, to understand global dynamics. Starting with the reworked soils and materials that make up our immediate environment, the Biennial aims to provide a concrete understanding of the chains of transformation that link the local to the global.

4,000 YOUNG PEOPLE AND A WIDE AUDIENCE

With a six-week cross-disciplinary programme, art-werk will invite visitors to rediscover their own local area. Thus, through its carefully designed educational programme, the third art-werk Biennial will offer several playful ways of making the *Sensitive Resources* project accessible to everyone. By bringing together scientists, professionals from the art world and an active public, this artistic project is an opportunity to share a new collective experience and connect with the living world.

“Art does not provide ready-made answers, but it sparks curiosity. Through a work of art, we can approach complex issues such as extractivism or the fascinating world of matter in a different way.”

— Bernard Vienat, director of art-werk.

INTRODUCTION TO ART-WERK AND ITS BIENNIAL

art-werk is a Geneva-based non-profit organisation that brings together contemporary art, science and ecology. Founded as a student initiative in 2012, the organisation has gradually grown and become more professional. With the creation of the (re)connecting.earth Biennial in 2021, art-werk has strengthened its mission by developing new approaches to public engagement and supporting artistic production. Through projects accessible to all, Art-Werk builds bridges between artists, researchers and citizens, fostering a shared reflection on our common future. The Biennial aims to highlight the vital importance of biodiversity in the evolution of cities and the maintenance of a quality of life in line with climate objectives. The artists participating in (re)connecting.earth create works that challenge and broaden our perception of ecosystems by engaging visitors on a sensory and emotional level.

- expected attendance: 12,000 to 15,000 visitors
- young audience: 4,600 children and young people reached
- artists: 17 artists and collectives with ~55 works

ARTISTS

Ana Alenso lives and works in Berlin.
anaalenso.com

Monira Al-Qadiri lives and works in Berlin.
moniraalqadiri.com

Yuri Ancarani lives and works in Milan.
yuriancarani.com

Khalil Berro lives and works between Zurich and Bedretto.
khalilberro.com

Mabe Bethônico lives and works between Geneva and Arles.
mabebethonico.online

Seba Calfuqueo lives and works in Chile.
sebacalfuqueo.com

Tanja Engelberts lives and works in The Hague.
tanjaengelberts.eu

Etter/Spozio
Caroline Etter & Laura Spozio live and work in Geneva.
[instagram.com/etterspozio/](https://www.instagram.com/etterspozio/)

Séverin Guelpa lives and works between Geneva, the Swiss Alps and the American deserts.
guelpa.ch

Daniel Hellmann (Soya the Cow) lives and works between Zurich and Lausanne. daniel-hellmann.com
& Rafa Bqueer lives and works in Brazil.
[instagram.com/rafabqueer](https://www.instagram.com/rafabqueer)

Olaf Holzapfel lives and works in Berlin.
olafholzapfel.de

Christian Jankowski lives and works in Berlin.
christianjankowski.com

Mathias Kessler lives and works in New York and Frankfurt.
mathiaskessler.com

Jeewi Lee lives and works between Berlin and Seoul. jeewi.de
& Philip C. Reiner lives and works in Berlin. proctctrl.com

Gabriela Löffel lives and works between Geneva and Bern.
loeffelgabriela.com

Gabriel Massan lives and works in Berlin.
[instagram.com/gabrielmassan](https://www.instagram.com/gabrielmassan)

The OMIJA **Collective** based in Busan, South Korea, comprises five 'Mijas': Park Mija, Yoo Mija, Lee Mija, Jung Mija et Hwang Mija.
reconnecting.earth/en/instructions/roll

ANA ALENZO (Comédie de Genève / Villa du Parc)

Informed by in-depth field research, her work explores global dependencies on natural resources and the forms of exploitation that result from them. Drawing on scientific studies and discussions with activists, she analyses specific cases such as the oil industry and gold mining in Latin America, as well as their effects on territories and communities.

Through assemblages, installations, videos and photographs, her work examines the tangled web of conflicts and paradoxes rooted in petro-cultures. Her practice is distinguished by a particular focus on materiality, ecology and the use of post-industrial elements.

For several years, she has been conducting field visits to mines and industrial complexes in Venezuela, Chile, Ghana and Germany, giving rise to the long-term project *Archives of the Planetary Mines*. She has recently exhibited at the Centro de Arte La Regenta, Gran Canaria (2023), the Kunstverein Arnsberg, Germany (2024), and the Galeria Abra, Caracas (2025). Gold, copper, diamonds and coltan. Resources can be a curse. Ana Alenzo's installation, *The mine gives, the mine takes (see Appendix)*, explores the link between resource wealth and self-destruction. It presents a sculptural landscape in which the mechanisms and consequences of mining are revealed as signs of an anthropocentric logic.

SÉVERIN GUELPA (Comédie de Genève)

His work draws inspiration from forms of collective intelligence and the ecologies specific to arid and remote regions. At the heart of his practice lies MATZA, a manifesto founded in 2014, which explores the capacity to create the common good and to imagine new relationships with nature and its resources. His architectural works, sculptures and videos take shape through the use of raw materials, building elements and recycled materials sourced from threatened territories. Following projects in the Mojave Desert, on the Aletsch Glacier and in the Kerkennah Islands, MATZA has recently expanded to Medellín, Cúcuta and Nairobi (2022–2023).

The work presented at the Comédie, *Energy as a Vehicle (see Appendix)*, will offer a sonic and physical exploration of the invisible flows that traverse urban and social space. The project invites listeners to tune into Geneva's underground energies: the pipes through which fluids and vital forces flow, the city's true silent arteries, set in dialogue with the voices of a choir and a singer.

CONFERENCE ON THE INTERSECTION OF SCIENCE AND ART

One of our conferences will explore the theme of sand extraction – an essential yet threatened resource – and its environmental and social consequences. Drawing on the work *Tidal Memories* (see Appendix) by Jeewi Lee and Philipp C. Reiner, the conference by Stéphanie Girardclos (PhD – UNIGE) will examine sand as an indicator of territorial vulnerability. Drawing on sedimentary dynamics and coastal equilibria, she will demonstrate how the availability or scarcity of sand reveals ecological, economic and geopolitical tensions. Massive extraction, accelerated erosion and climate change are profoundly altering coastlines and catchment areas. Sand thus emerges as a location-specific resource whose fragility highlights the interdependencies between natural environments and human systems.

For the work *Tidal Memories*, Jeewi Lee, in collaboration with Philip C. Reiner, collected grains of sand from three beaches in New York, Mallorca and Busan. These samples were examined and photographed under a microscope, then magnified ten thousand times to reveal their unique forms. The work thus highlights the relationship between geology, extraction and industry. It invites us to consider sand not as a uniform material, but as a situated resource, shaped by natural dynamics and integrated into global economic chains.

EDUCATIONAL PROGRAMME

During the six weeks of the Biennial, around 2,000 primary school students take part in guided outdoor workshops, particularly along the Voie verte. This route provides a practical way to explore urban biodiversity, sustainable transport and the spatial changes brought about by infrastructure. The artworks serve as entry points for understanding the flow of raw materials, natural cycles and the use of resources.

At the same time, 2,000 secondary school students are gaining access to structured teaching materials, enabling teachers to organise visits around two complementary themes: natural resources and biodiversity/urban planning. The content is available online, artwork by artwork, to allow for further exploration in the classroom. The Biennial thus functions as an open-air laboratory, linking artistic creation, observation of the local area and scientific understanding.

At the same time, art-werk also runs the annual ‘Duchamp at...’ programme, with a team of educators leading workshops in schools using a travelling exhibition kit.

TOPICS COVERED

Extractivism – Material World
Voie verte, mobility, urban planning
Supply chains
Processing, embodied energy
Resource recovery – circularity
Utopias and consumption patterns
Agriculture, minerals, energy

EVENTS

- 2 openings
- 3 conferences and a mini-symposium (emotions and engagement, natural resources, the circular economy, in partnership with HES-SO and the University of Geneva)
- 2 screenings with round-table discussions
- Live performance: *DÉ-DOMESTICATION* (Soya the Cow / Daniel Hellmann)
- 2 performances at the Comédie de Genève
- 4 guided tours (including 2 by bike)
- Corporate tours
- 4-6 themed workshops
reuse, mining, local biodiversity
- Programme for primary schools
- Educational pack for lower and upper secondary schools
- 10 new commissioned artworks
- 1 quiz for visitors

LIEUX

Comédie de Genève – exhibition of instructions and installations, live performance: Soya The Cow
Voie verte – pedestrian and cycle exhibition route, outdoors
Villa du Parc (contemporary art centre) – video exhibition, installations
Eaux-Vives Station – video exhibition, MIRE Project
Chêne-Bougeries
Chêne-Bourg Station – video exhibition, MIRE Project
Thônex – works and instructions

PARTNERS AND SUPPORTERS

République et Canton de Genève
Ville de Genève
Comédie de Genève
Villa du Parc
Commune de Chêne-Bougeries
Commune de Thônex
Projet MIRE
Association pour la Sauvegarde du Léman
Public Eye
Matériuum
Histoire sans chute
De fil en fil
Vert le Futur
HES-SO Genève
Centre Interfacultaire en Sciences Affectives (CISA)
Festival du Film Vert
Terragir – énergie solidaire
Loterie Romande
Fondation Göhner
Pro Vélo – Genève
Pro Helvetia
INAREMA

PRACTICAL INFORMATION

www.reconnecting.earth
www.art-werk.ch

ig @artwerkch
ig @reconnecting.earth

fb @artwerkch
fb @reconnectingearth

Lkdln @art-werk

PRESS CONTACTS

ÉMILIE BERTHOUSOZ
emilie.berthouzoz@art-werk.ch

ANA EICHMANN
ana.eichmann@art-werk.ch

PRESS IMAGES LINK

https://drive.google.com/drive/folders/1qUnLi8_HhCLtzMmTg9U4wQ9_lhBsfKyD

APPENDIX



Ana Alenso, *The mine gives, the mine takes*, 2020.
©Ana Alenso

A view of part of Ana Alenso's installation, which will be on display at the Villa du Parc (contemporary art centre). Other works will be on display at the Comédie de Genève.



Seba Calfuqueo, *FOLII*, 2025,
Registro Diego Argote.
©Seba Calfuqueo

Two series of photographs by Seba Calfuqueo will be on display on special stands along the Voie verte.



Jeewi Lee & Phillip C. Reiner,
Tidal Memories, beach of Dadaepo,
South Korea, 2025.
©Busan Biennial Organisation

Paintings by Jeewi Lee will be on display at the Villa du Parc, sculptures along the Voie verte trail, and instructions in the municipality of Thônex.

APPENDIX



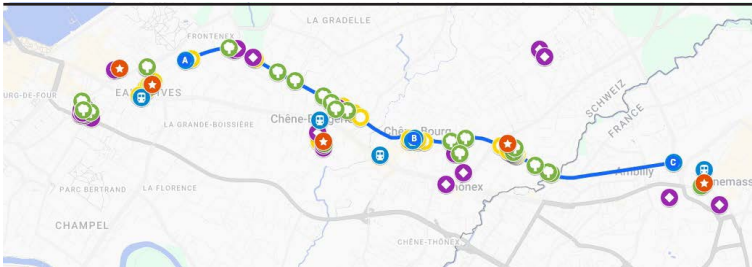
Christian Jankowski, *Die Jagd*, 1992, video screenshot.
©Christian Jankowski

This video will be shown on the MIRE screens at Chêne-Bourg station.



Séverin Guelpa, *Energy as a Vehicle*, mockup installation, 2025.
©Séverin Guelpa

This installation will be on display at the Comédie de Genève.



A preview of the map for this third edition of the (re)connecting.earth Biennial. ©art-werk

APPENDIX



(re)connecting.earth Biennial (02)
2023, botanical workshop. ©art-werk



Guided tour of the (re)connecting.
earth Biennial (02), 2023. ©art-werk